



David and Bathsheba (After Lucas Cranach)

26" x 19.5"

Original Lithograph, wash, drawing, scraper on zinc, 2nd and published state of the 10 states, on Arches paper, signed in pencil
1947

£17,500

PICASSO

Available Art


Altvest Capital Partners
Real Assets ♦ Real Returns



Nature morte au casse-croute II

75.2cm x 62cm

ORIGINAL LINOCUT, MOUGINS -JUNE 1962, 4TH STATE, PRINTED
IN BLACK FROM ONE BLOCK, ON VELIN ARCHES WATERMARKED
PAPER, SIGNED AND DEDICATED "POUR ARNERA FILS" BY THE
ARTIST IN PENCIL SIZE

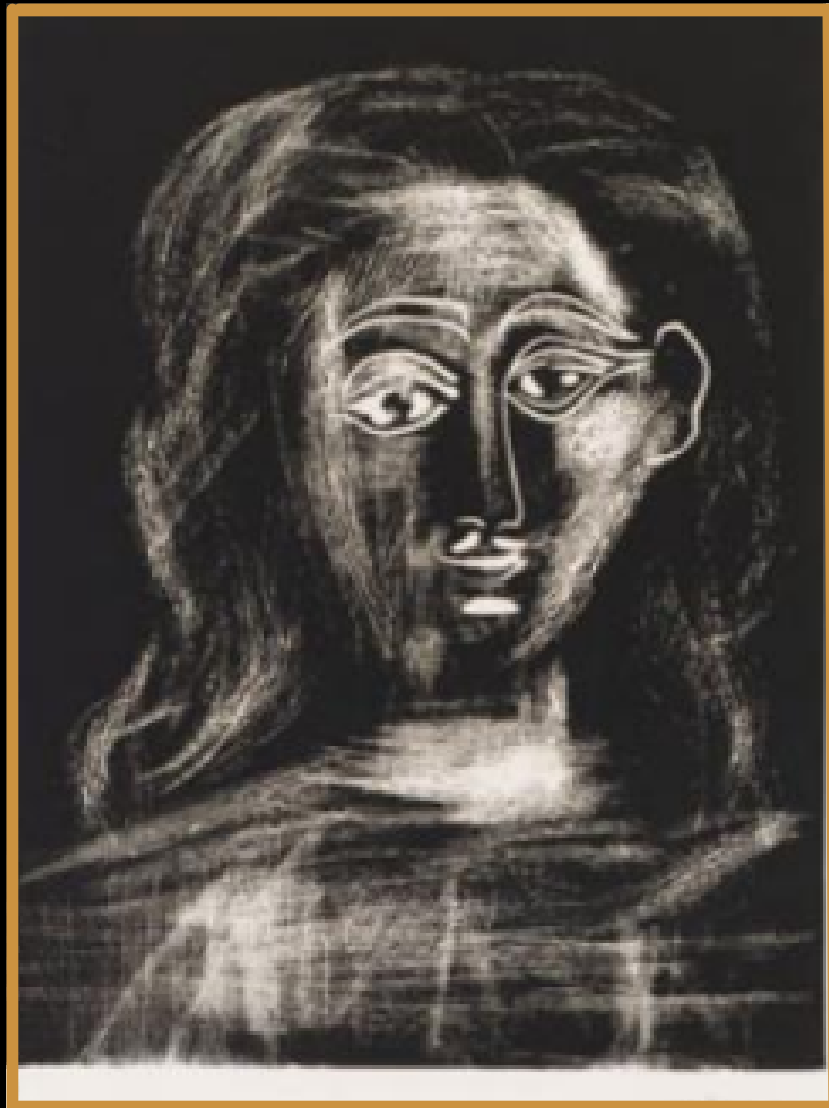
1962

£14,000

PICASSO

Available Art


Altvest Capital Partners
Real Assets ♦ Real Returns



Jacqueline aux cheveux flous, en buste

621mm x 445mm

**ORIGINAL COLOUR LINOCUT , MOUGINS -12/2/1962, , ON VELIN
ARCHES WATERMARKED PAPER
1962**

£24,000



Bacchus au flacon et Marie Therese a la coupe

413 X 314 MM

ORIGINAL ETCHING, 30/1/1934 , ON LAID PAPER, WITH WIDE MARGINS , DATED IN THE STONE ABOVE RIGHT, SIGNED BY THE ARTIST IN PENCIL

1934

£12,000

PICASSO

Available Art



Altvest Capital Partners
Real Assets ♦ Real Returns



Le Vieux Roi

64.9 x 49.7CM

ORIGINAL LITHOGRAPH, CANNES 6/1/1959, ONARCHES
WATERMARKED PAPER WITH MOURLOT WATERMARK, SIGNED
BY THE ARTIST WITH A BLUE CRAYON
1959

£8,500



La Danse des Faunes

406 X 522 MM

ORIGINAL LITHOGRAPH, CANNES, MADE ON ZINC IN TWO
COLOURS, 24/5/1957, MADE ON A ZINC PLATE, ON LIGHT
ARCHES, WATERMARKED PAPER, DATED IN THE STONE AND
SIGNED BY THE ARTIST IN BLUE AND RED CRAYON
1957

£8,000



Femme au balco

65.5 X 50 CM

ORIGINAL LITHOGRAPH, CANNES, JANUARY 1960, CRAYON WITH
FRONTAGE ON TRANSFER PAPER TRANSFERRED TO STONE, ON
ARCHES PAPER, SIGNED BY THE ARTIST IN THE STONE AND IN
RED CRAYON, WITH FULL MARGINS

1960

£4,500



La Celestine, sa protégée, et un jeune gentilhomme

ORIGINAL SUGAR AQUATINT, MOUGUINS 26/6/1968, ON RIVES
PAPER, SIGNED BY THE ARTIST IN PENCIL
1968

£5,000



Portrait d'un Bourgeois Hollandais

**ORIGINAL ETCHING, MOUGUINS, II 10/8/1968 , ON RIVES PAPER,
SIGNED BY THE ARTIST IN PENCIL, WITH FULL MARGINS, A
DECKLE EDGE BELOW EDITION: 21/50
1968**

£6,250